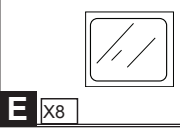
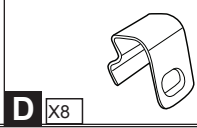
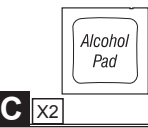
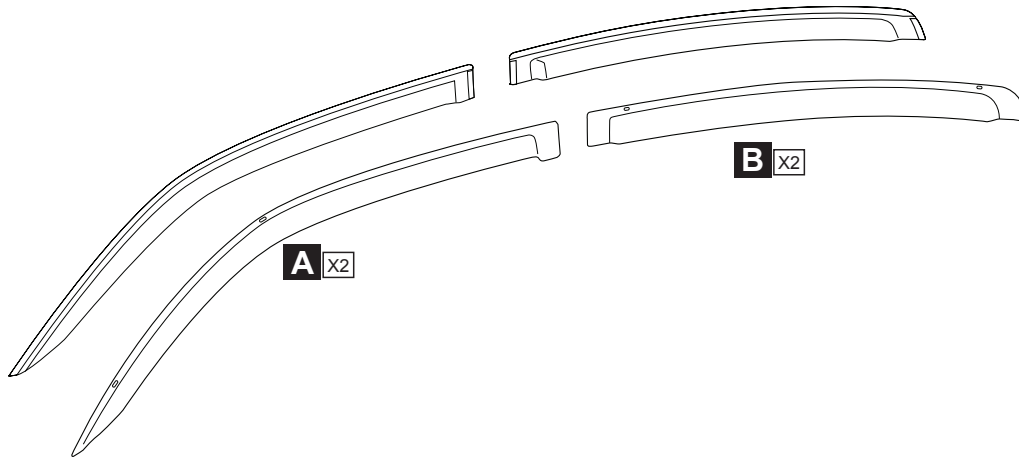




# DODGE CHARGER

## Side Window Deflectors

### GENUINE ACCESSORIES



**GB** **INSTALLATION INSTRUCTION** **DOOR VISORS**  
Parts must not be fitted until registration of the vehicle has been obtained.

Subject to alteration without notice  
Reservadas modificaciones técnicas  
Sous réserve de modifications techniques

Expert Fitment Required  
Montaje sólo por el concesionario  
Montage par spécialiste nécessaire

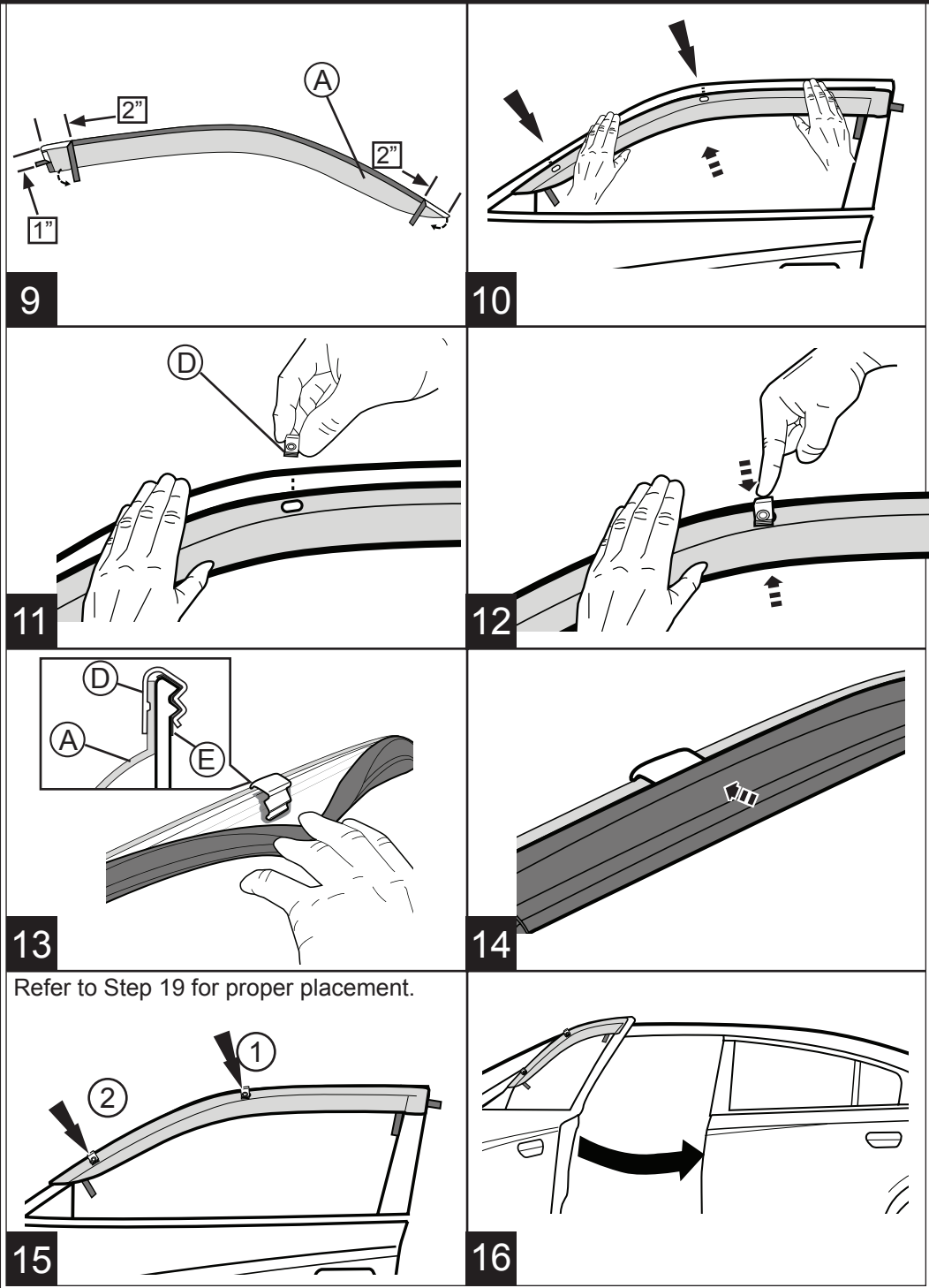


## GENUINE ACCESSORIES

<p>1</p>	<p>2</p>
<p>3</p>	<p>4</p>
<p>5</p>	<p>6</p>
<p>7</p>	<p>8</p>



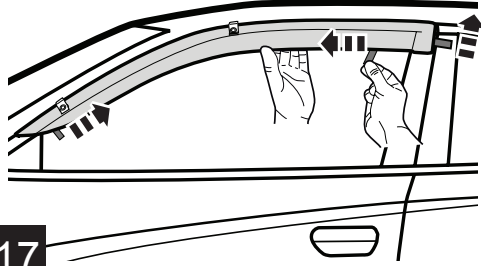
## GENUINE ACCESSORIES



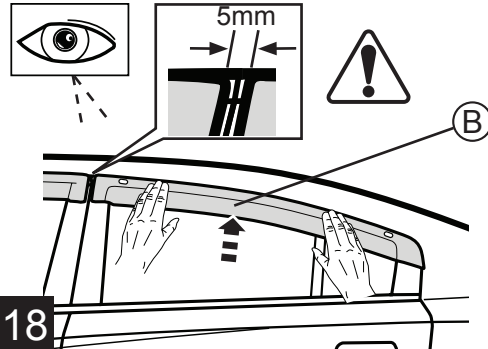


## GENUINE ACCESSORIES

Lift visor slightly away from vehicle to assist with tape removal.

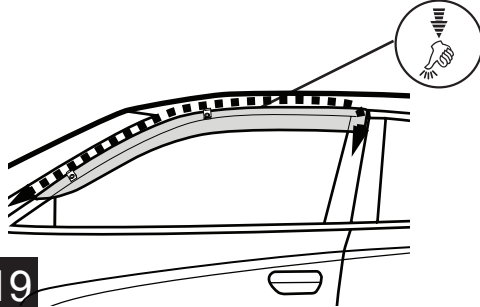


17

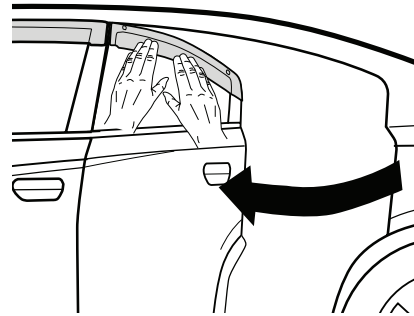


18

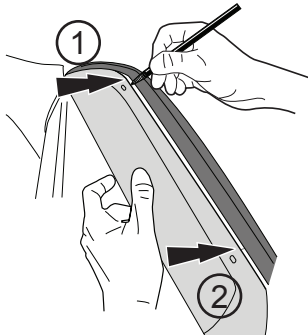
Apply firm even pressure for 30 seconds.



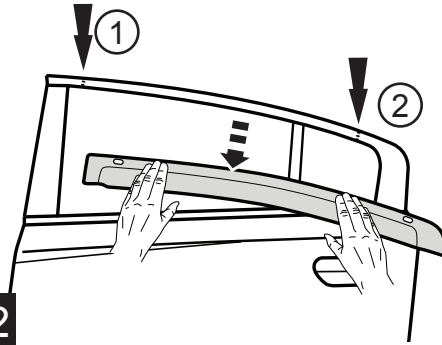
19



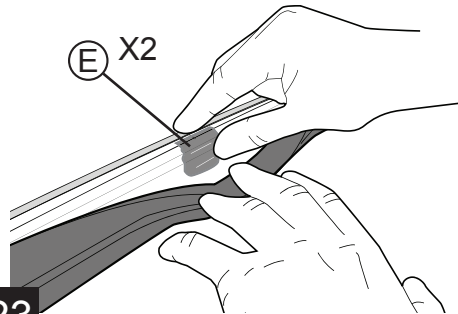
20



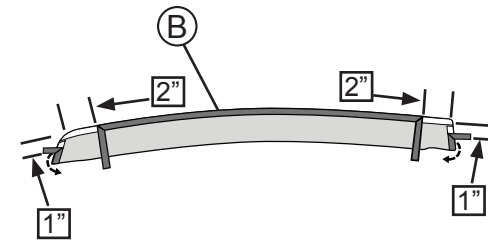
21



22



23

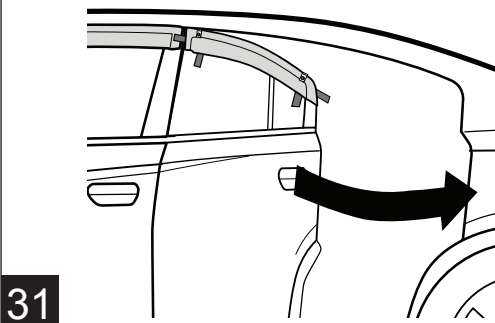
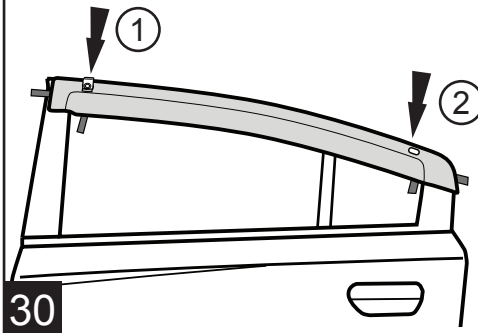
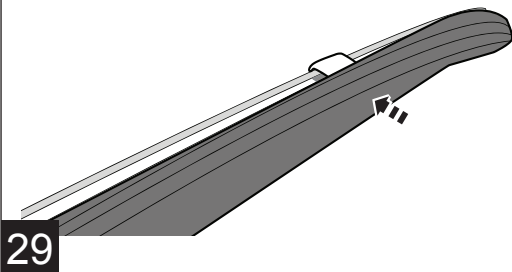
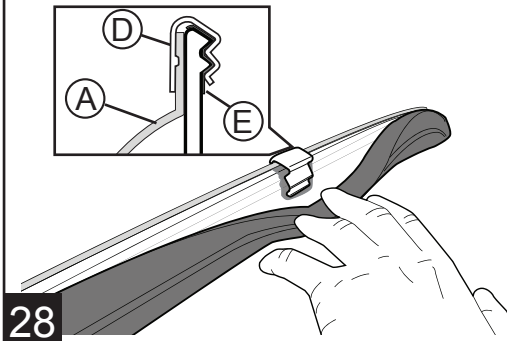
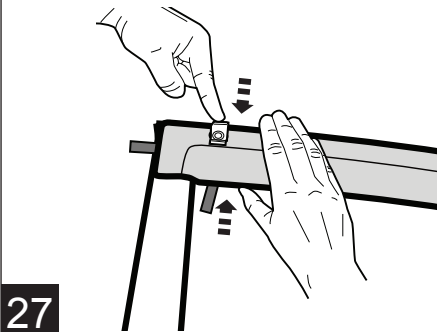
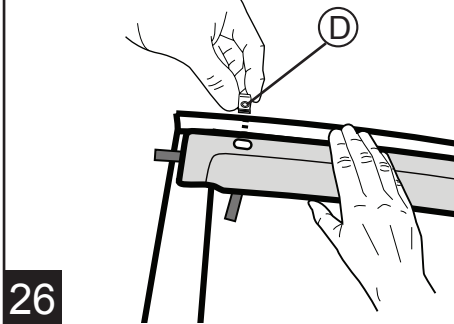
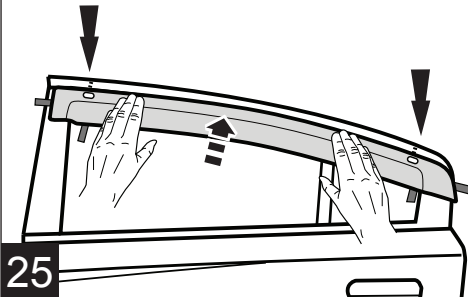


24

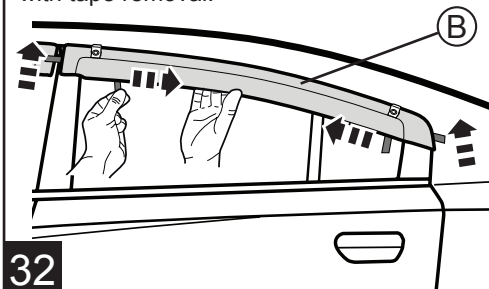


## GENUINE ACCESSORIES

Refer to Step 19 for proper placement.



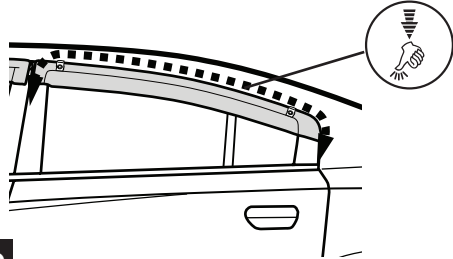
Lift visor slightly away from vehicle to assist with tape removal.



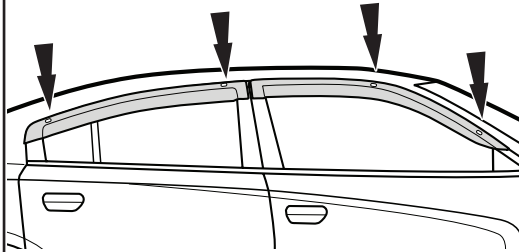


## GENUINE ACCESSORIES

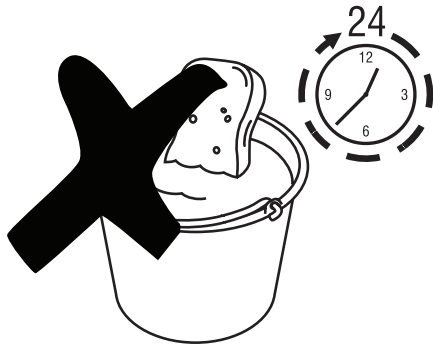
Apply firm even pressure for 30 seconds.



33



34



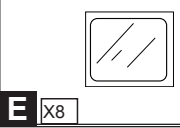
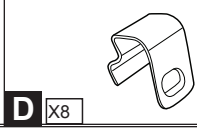
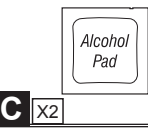
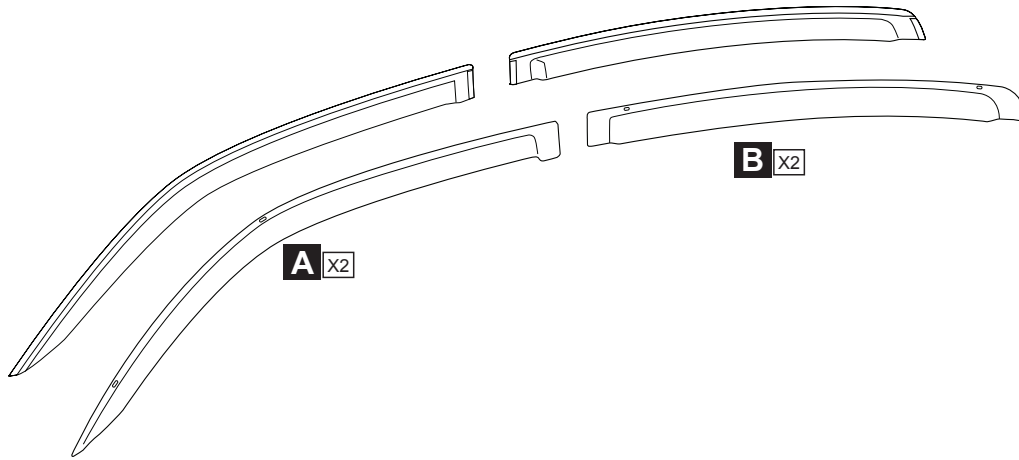
35



# DODGE CHARGER

## Défecteurs latéraux pour vitres

### ACCESSOIRES AUTHENTIQUES



**F**

#### NOTICE DE MONTAGE

Ne pas monter les pièces avant l'enregistrement du véhicule.

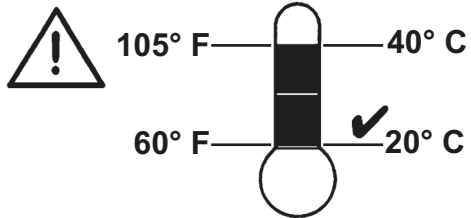
#### PARE-SOLEIL DE PORTE

Subject to alteration without notice  
Reservadas modificaciones técnicas  
Sous réserve de modifications techniques

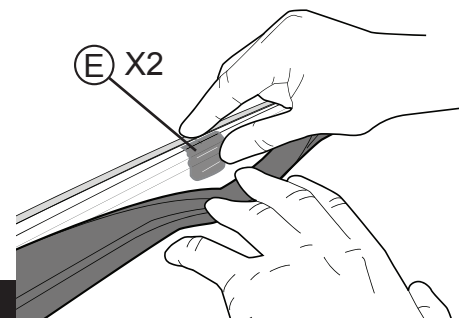
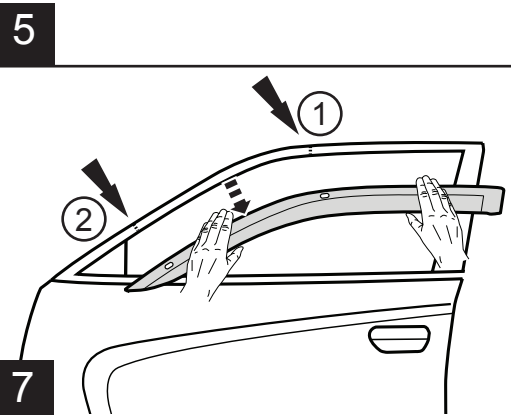
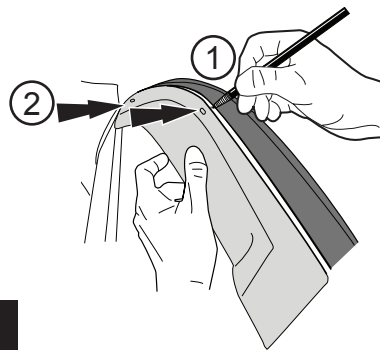
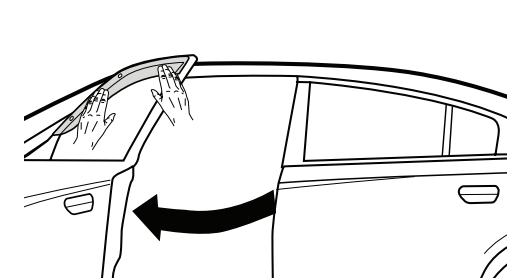
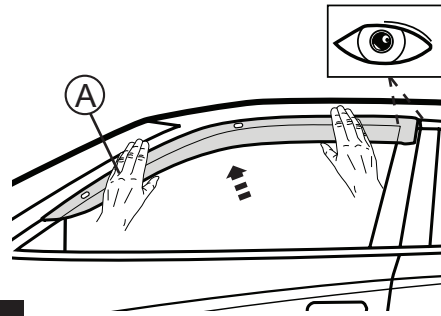
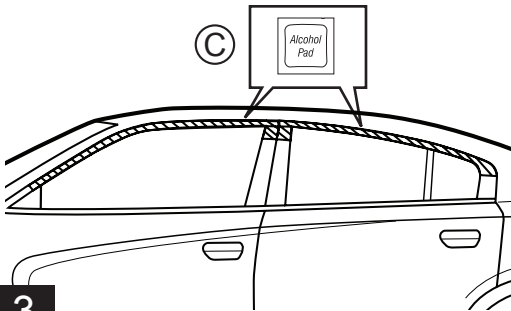
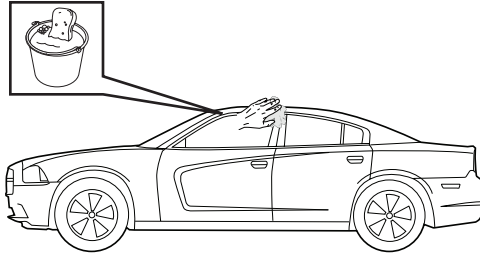
Expert Fitment Required  
Montaje sólo por el concesionario  
Montage par spécialiste nécessaire



## ACCESSOIRES AUTHENTIQUE



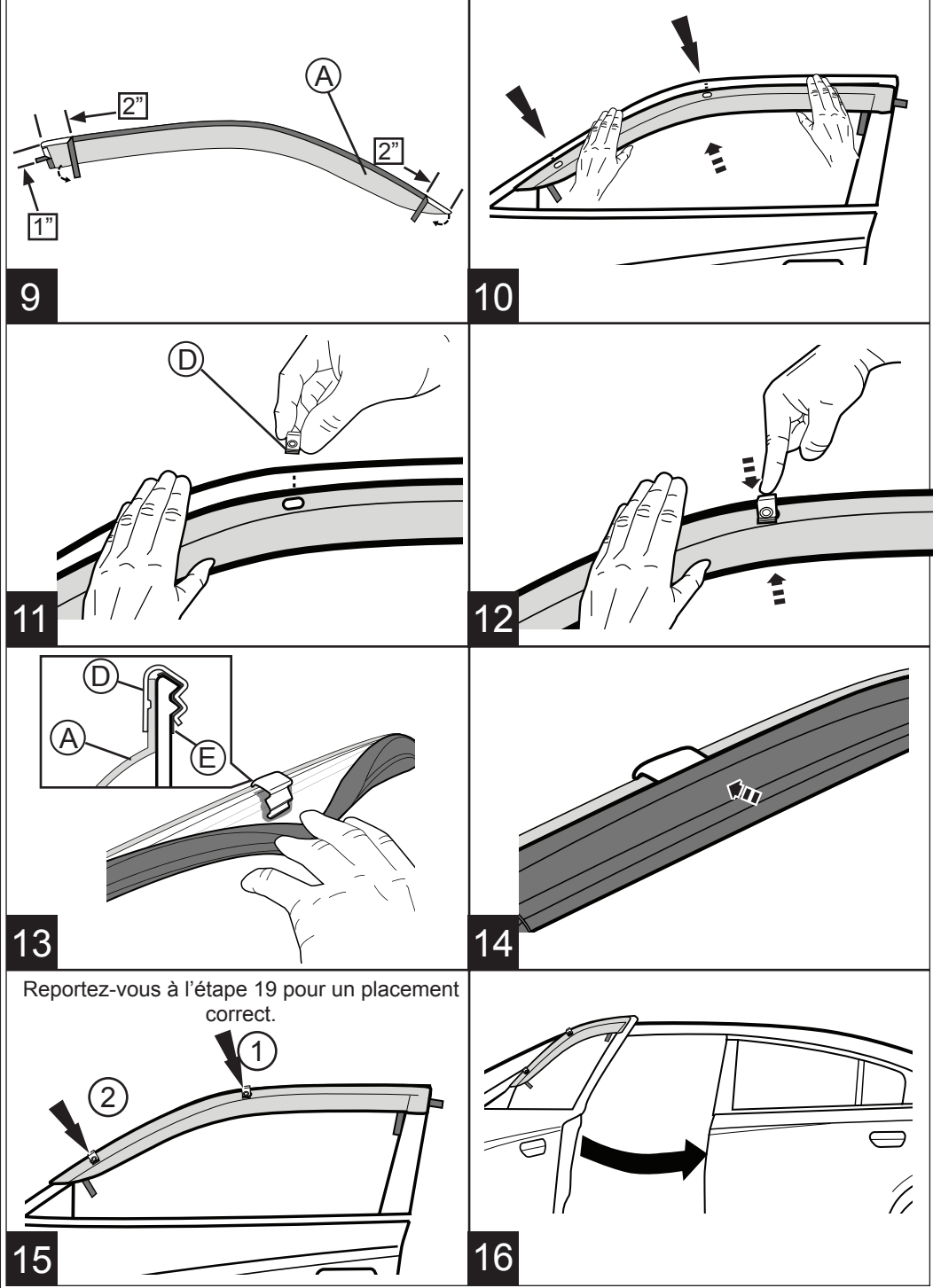
1







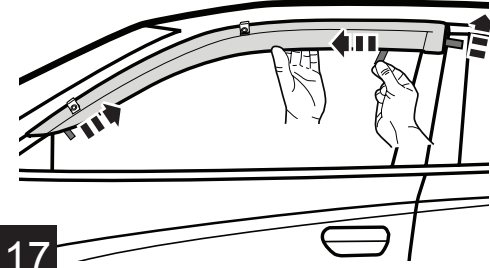
## ACCESSOIRES AUTHENTIQUE



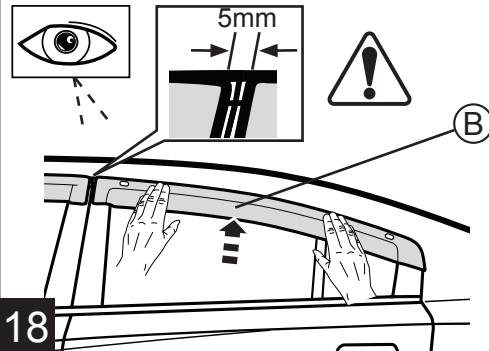


## ACCESSOIRES AUTHENTIQUE

Ascenseur visière légèrement à l'écart du véhicule pour aider à l'enlèvement de bande.

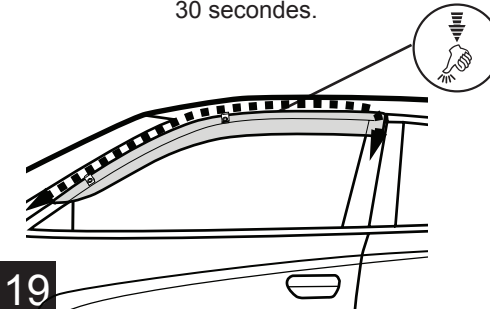


17

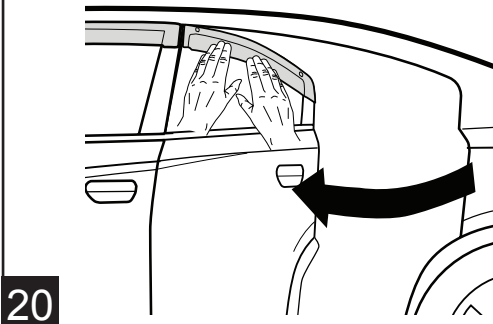


18

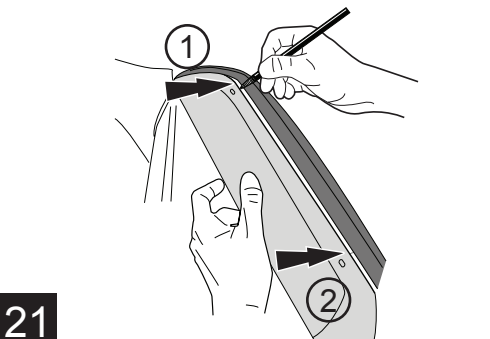
Faire pression uniformément pendant 30 secondes.



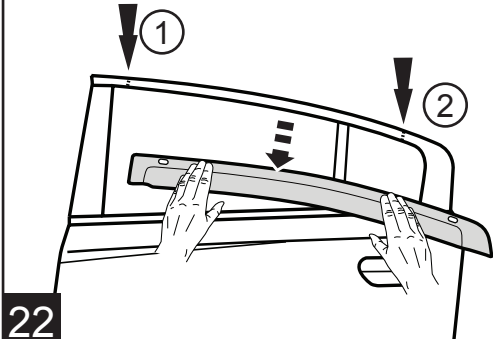
19



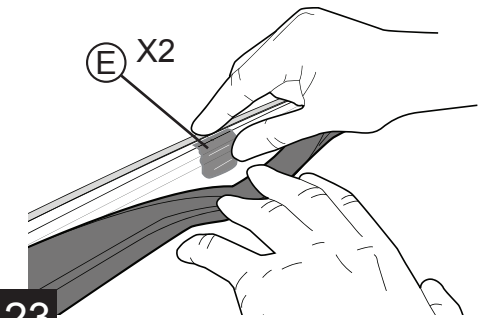
20



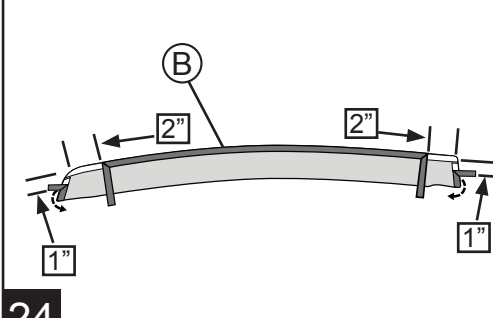
21



22



23

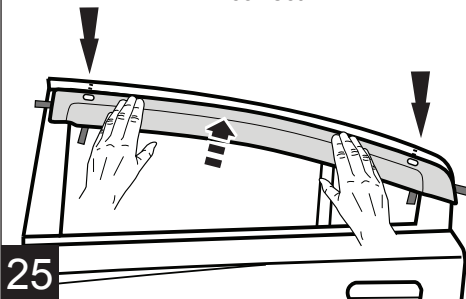


24

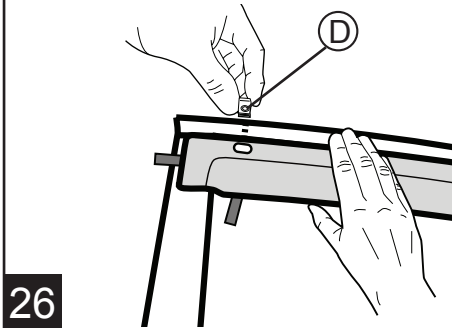


## ACCESSOIRES AUTHENTIQUE

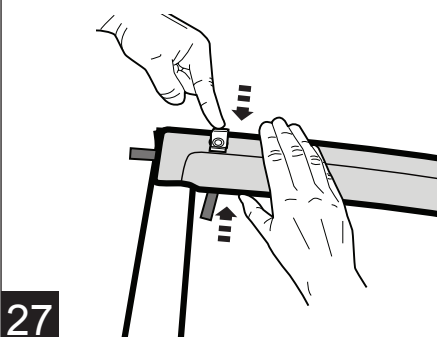
Reportez-vous à l'étape 19 pour un placement correct.



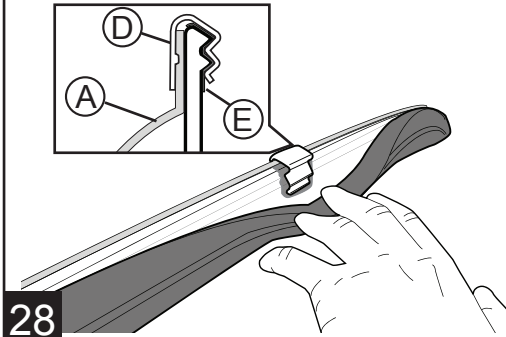
25



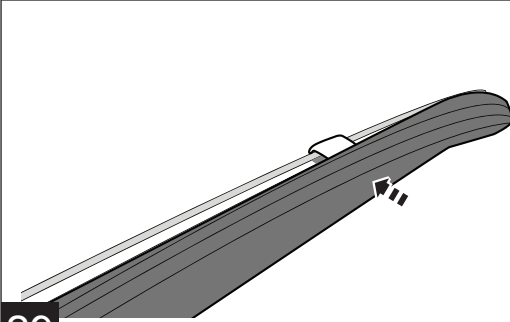
26



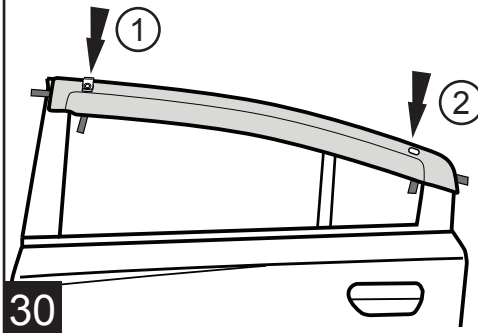
27



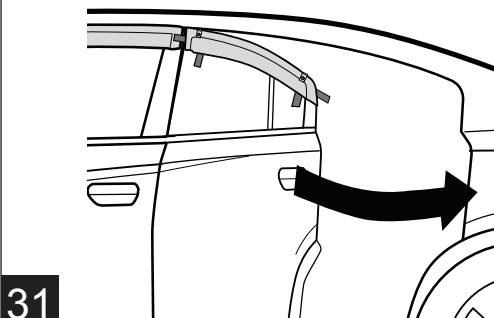
28



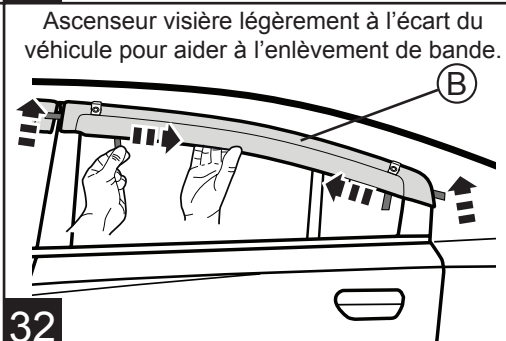
29



30



31



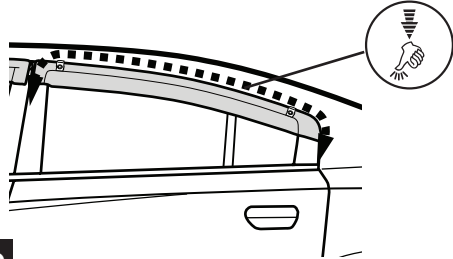
32

Ascenseur visière légèrement à l'écart du véhicule pour aider à l'enlèvement de bande.

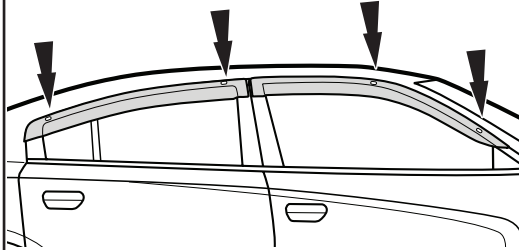


## ACCESSOIRES AUTHENTIQUE

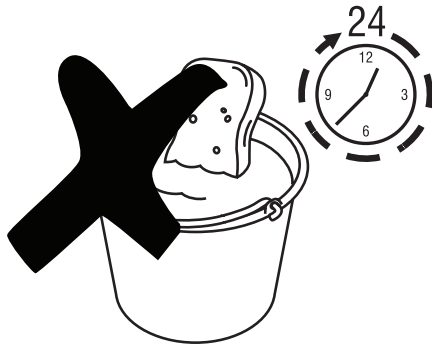
Faire pression uniformément pendant 30 secondes.



33



34



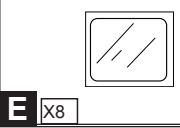
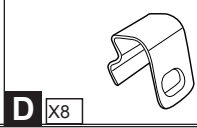
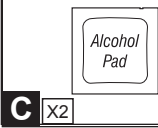
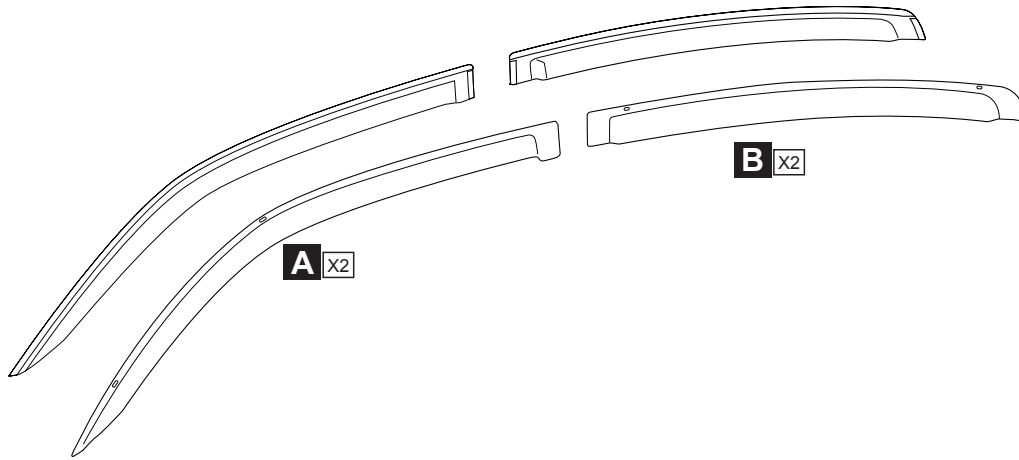
35



# DODGE CHARGER

## Deflectores para ventana lateral

### ACCESORIOS ORIGINALES



**E** **INSTRUCCIONES DE MONTAJE** **VISORES DE PUERTA**  
No se permite montar las piezas antes de registrar el vehículo.

Subject to alteration without notice  
Reservadas modificaciones técnicas  
Sous réserve de modifications techniques

Expert Fitment Required  
Montaje sólo por el concesionario  
Montage par spécialiste nécessaire



## ACCESORIOS ORIGINALES

<p>105° F — 40° C 60° F — 20° C ✓</p>	<p>2</p>
<p>3</p>	<p>4</p>
<p>5</p>	<p>6</p>
<p>7</p>	<p>8</p>



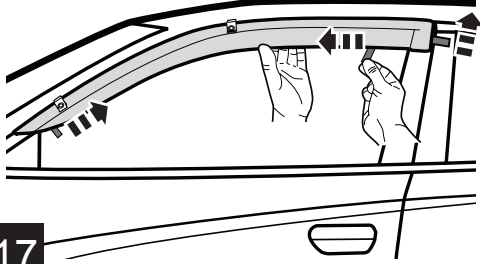
## ACCESORIOS ORIGINALES

<p>9</p>	<p>10</p>
<p>11</p>	<p>12</p>
<p>13</p>	<p>14</p>
<p>Consulte el paso 19 para su correcta colocación.</p>	
<p>15</p>	<p>16</p>

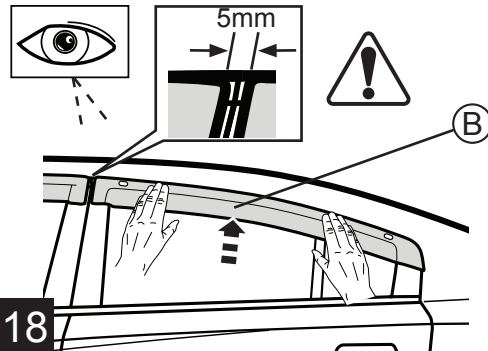


## ACCESORIOS ORIGINALES

Levantar la visera un poco lejos del vehículo para ayudar con la eliminación de la cinta.

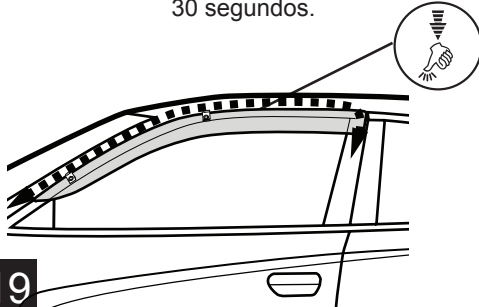


17

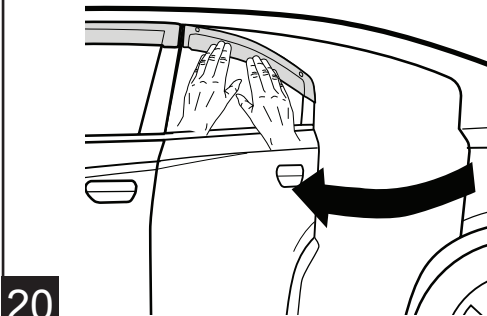


18

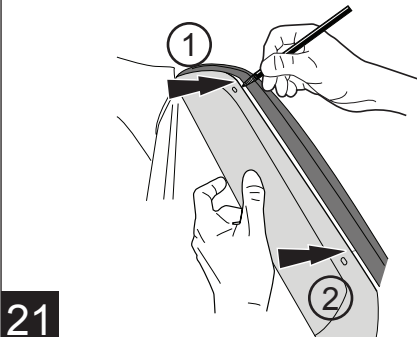
Presione de manera firme y pareja durante 30 segundos.



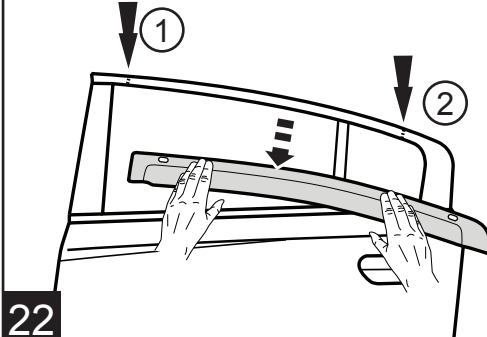
19



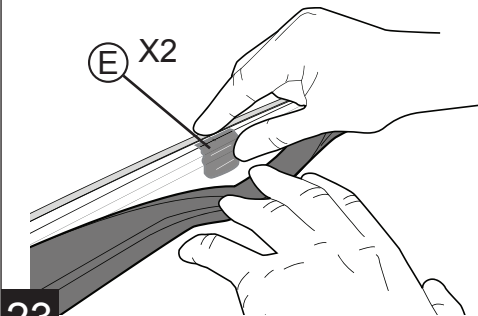
20



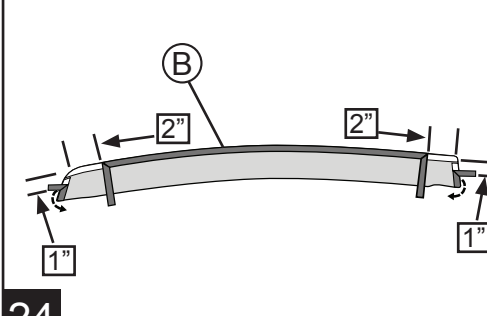
21



22



23



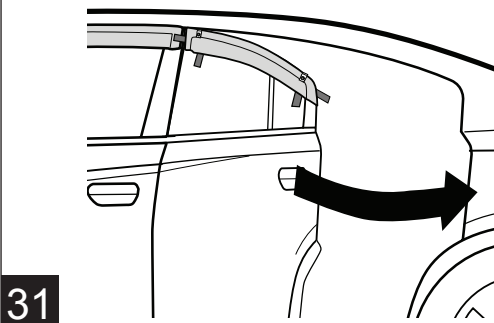
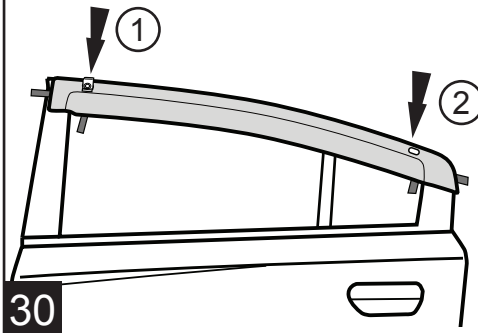
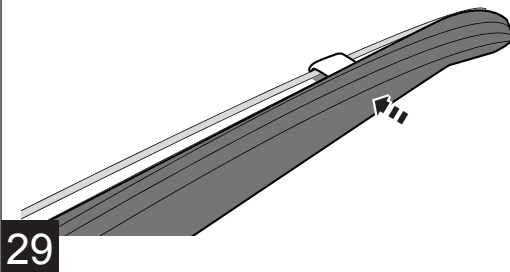
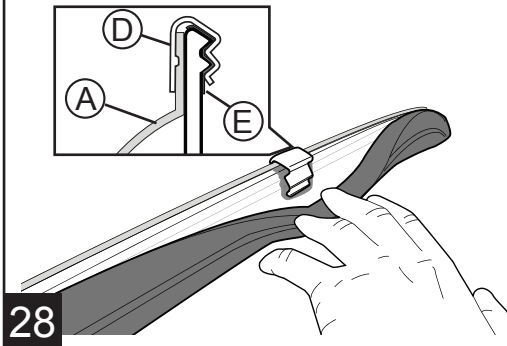
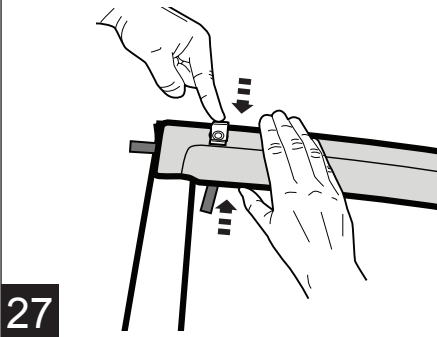
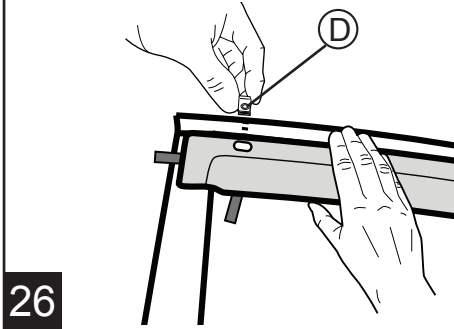
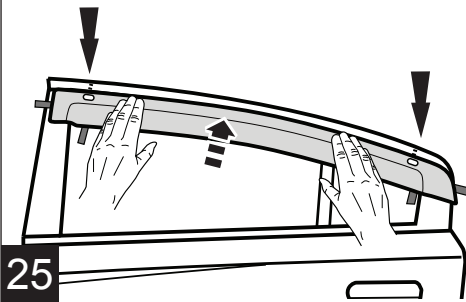
24





## ACCESORIOS ORIGINALES

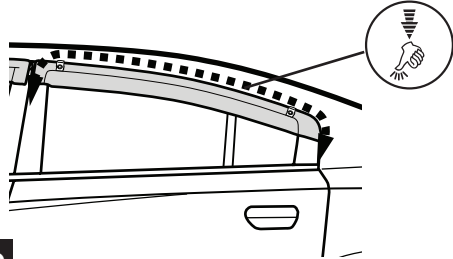
Consulte el paso 19 para su correcta colocación.



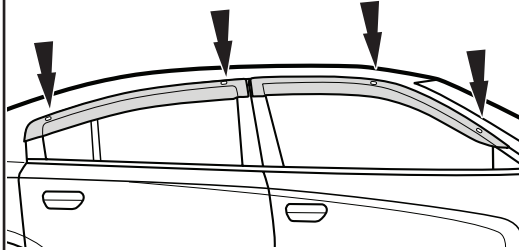


## ACCESORIOS ORIGINALES

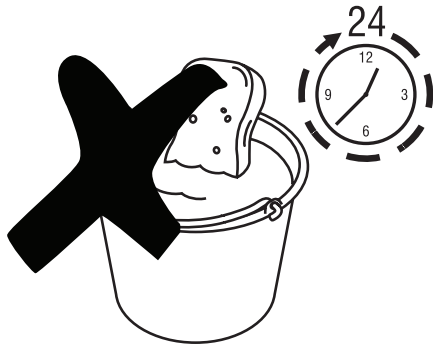
Presione de manera firme y pareja durante 30 segundos.



33



34



35